

# E-compact instant water heater CEX 9-U



## Application areas

Single point supply:

- > Kitchen sink
- > Washbasin
- > Double washbasin



# E-compact instant water heater

## CEX9-U

### Product information



**Energy efficiency class** **A** (Scale: A+ to F) **CEX9-U** (Multiple Power System: 6.6 or 8.8 kW adjustable)

Part number:	2400-26249	
Type:	closed-outlet	
Maximum operating pressure [MPa (bar)]:	1 (10)	
Water connections (thread connections):	G ½"	
User set temperature [°C]:	20 to 55	
Hot water output at $\Delta t = 33\text{ K}^{1) 2)}$ [l/min]:	2.9	3.8
Switch-on flow rate / max. flow rate <sup>3)</sup> [l/min]:	2 / 5	
Nominal power rating [kW]:	6.6	8.8
Voltage supply:	1~ / N / PE 220 ..240 V AC	
Nominal current <sup>2)</sup> [A]:	29	38
Required cable diameter <sup>2)</sup> [mm²]:	4 – 6	6
Bare wire heating system IES®:	✓	
Ready for Smart Control:	✓  (optional)	
Ready for FX wireless remote control:	✓  (optional)	
Solar-compatible, suitable for reheating (inlet temperature ≤ 70 °C):	✓	
VDE approved / Protection class:	✓ / IP 24	
Specific water resistance at 15 °C [ $\Omega\text{cm}$ ] ≥ :	1100	
Nominal volume [litres]:	0.3	
Weight filled with water [kg]:	approx. 2.7	
Dimensions (height × width × depth) [cm]:	29.4 × 17.7 × 10.8	

1) Temperature increase e.g. from 12 °C to 45 °C 2) Depending on the selected power rating 3) Limited flow amount for optimal temperature increase

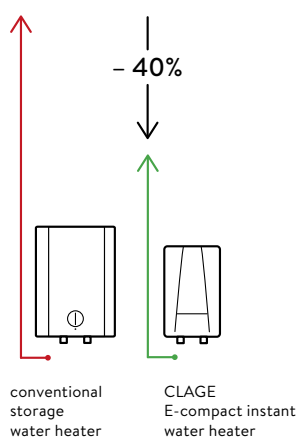
#### Description

- > Electronically controlled instant water heater (undersink model) with compact design
- > The heating output is electronically controlled. This provides an ideal hot water temperature without the need to add cold water at the tap.
- > Push-button operation with LCD indicator for precise temperature setting between 20 °C and 55 °C
- > Two programming buttons for individual pre-set temperatures limits as well as function indicators
- > Easy installation under the kitchen sink facilitated by small dimensions and external ½-inch water connectors
- > Precise temperatures due to TWIN TEMPERATURE control TTC® up to the capacity of the appliance
- > The efficient bare wire heating system IES® reduces lime scale deposits and provides an extended service life
- > With the Multiple Power System MPS®, the maximum power rating is set at the time of installation: 6.6 or 8.8 kW
- > Can also be controlled via tablet or smartphone (iOS9 or higher / Android-OS4.4 or higher, FXE adapter, CLAGE Home Server and the »Smart Control« app required)
- > Solar-compatible (inlet temperature ≤ 70 °C)

#### Profitability comparison (Source: www.clage.com)

##### Saves up to 40 % energy compared to conventional storage heaters.

The E-compact instant water heater features an economical operation. The water is heated directly as it flows through the unit. Hot water is not stored in a tank, which saves standby energy that would be otherwise required.



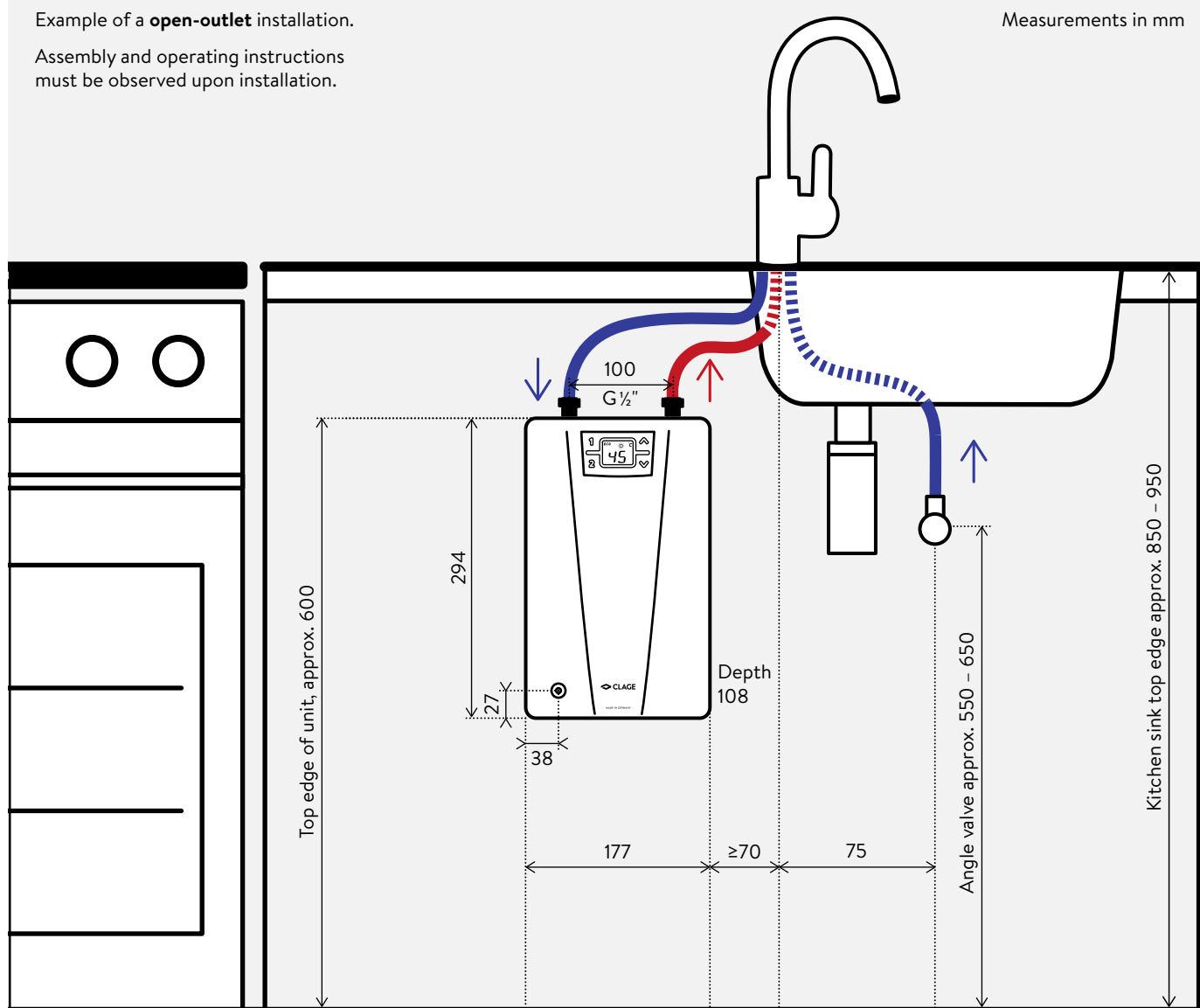
# E-compact instant water heater CEX9-U Installation



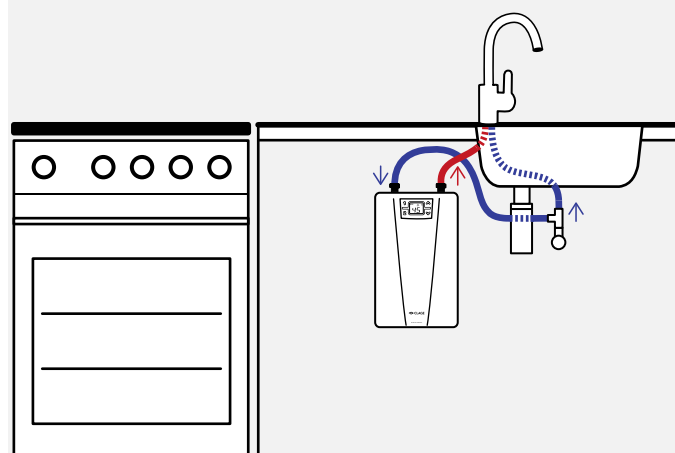
Example of a **open-outlet** installation.

Assembly and operating instructions must be observed upon installation.

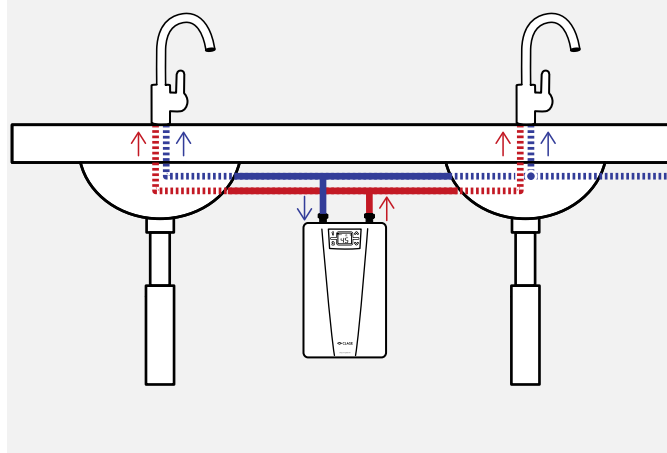
Measurements in mm



Alternative: **closed-outlet** installation



Alternative: installation with **closed-outlet** tap and **double washbasin**



# E-compact instant water heater **CEX 9-U** Accessories



## **FX** (optional)

In addition to user controls directly at the unit, the remote control allows for convenient temperature adjustment of the instant water heater at interior distances of up to 10 meters. Secure, bidirectional wireless transfer, continuous two-button temperature selection, two pre-set buttons and a LCD display, magnetic wall holder and batteries included. IP20.

Dimensions (H × W × D): 5.8 × 12.5 × 1.9 cm

**FX:** Part no. 2400-26090



## **Accessory for undersink installation** (optional)

### **Reducing adapter**

$\frac{3}{8}$ -inch (a) ×  $\frac{1}{2}$ -inch (i) flat sealing

Part no. 89675

### **FVS** (necessary: reducing adapter)

Flexible connecting hose  $\frac{3}{8}$ -inch cap nut ×  $\frac{3}{8}$ -inch cap nut, 50 cm long  
Part no. 89620

### **T-piece** (necessary: reducing adapter)

Special T-connector  $\frac{3}{8}$ -inch cap nut ×  $\frac{3}{8}$ -inch squeeze-type 10 mm  
Part no. 89610



## **Recommended accessories for kitchen application** (optional)

### **EAK** (vented)

Single-lever mixer tap with side lever and swivel spout 20 cm

**EAK:** Part no. 1100-04430



## **Recommended accessories for bath application** (optional)

### **EWT / EWT-C**

Single-lever mixer tap, nickel and lead free waterways, Easy-Fix fastening system and drawbar drain fitting, spout 11.2 cm, height × width: 15,1 × 17,5 cm

**EWT** (open-outlet): Part no. 1100-04420

**EWT-C** (closed-outlet): Part no. 1100-04421

# E-compact instant water heater

## CEX 9-U

### Accessories

---



#### Aerator CSP 6, CSP 6a and CSP 6i (optional)

The aerator at the tap supports the energy- and water-saving operation of the compact instant water heater. The new special CSP aerators mix air into the water and thus create a uniform water stream that does not splatter but softly cascades down.

- > Aerator insert for tap adapter M 22/24 at the tap  
**CSP 6 (< 3.5 l / min):** Part no. 0010-00461
- > Aerator with chrome tap adapter M 24a  
(suitable for taps with internal thread at outlet)  
**CSP 6a:** Part no. 0010-0047
- > Aerator with chrome tap adapter M 22i  
(suitable for taps with external thread at outlet)  
**CSP 6i:** Part no. 0010-0046