



l-85 vitaq valve



TECNICAL SHEET 07/2015 | IPO2020

SCOPE

L-85 VITAQ series are 1/4 turn angle valves designed for being connected to water pipe systems. They are used to shut off individually water supply to washing machines, dishwashers and other different water supply points to proceed to their repairing or replacement..

The VITAQ SYSTEM makes them particularly suitable to avoid the effects of lime, increasing the life span of the valve

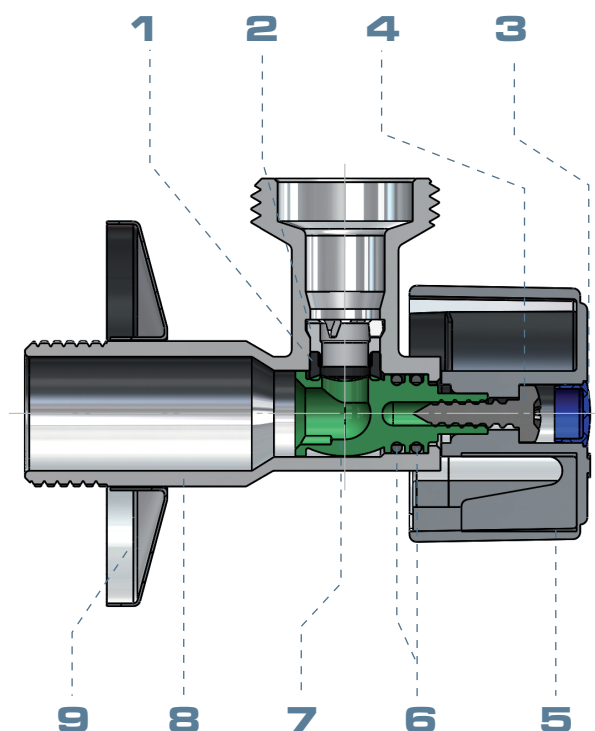
SERVICE CONDITIONS

Nominal pressure:	16 bar
Test pressure:	25 bar
Temperature range:	Cold and hot water up to 95°C
Fluid:	Water intended to human consumption and domestic hot water.

COMPONENTS

Item	Component	Material	Treatment
1	Seat	NBR	
2	Supporting clip	POM	
3	Index	Red/Blue Index	
4	Screw	Stainless steel	
5	Handle ₁	ABS/Metal	Chrome plated
6	O-ring	NBR	
7	Stem-ball	Anti-lime polimer	
8	Body	European Brass CW617N	Chrome plated
9	Rosette	Stainless steel	

1 According to the models



MAIN CONSTRUCTIVE FEATURES

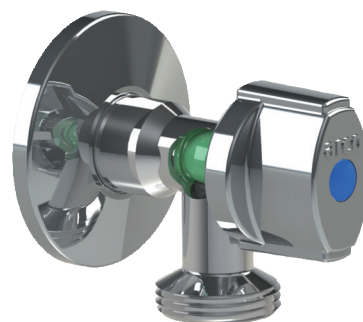
VITAQ SYSTEM

VITAQ stem-ball are manufactured in one piece made of special anti-lime polymer, which increases its resistance, allows a softer operation of the valve and blocks the lime adhesion on it.

This VITAQ stem-ball has the same design than ARCO traditional brass-made shut off. It has the same characteristics of leak tightness and loss of pressure than this traditional one, but with the special advantage to prevent negative effects of lime.

In those installations where water's hardness and temperature make easier the lime deposition, as well as a low maneuver frequency; leads to the valve's hard operation after long periods of time.

This anti-lime ball is the solution to avoid a hard operation and keep a constant flow rate and avoid the loss of flow caused by the lime adhered.



MAIN CONSTRUCTIVE FEATURES

LEAKTIGHTNESS

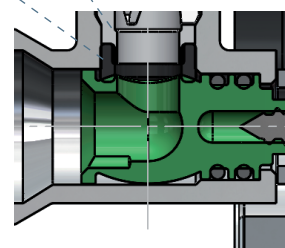
Internal

The supporting clip made of POM is placed in the valve to push the NBR seat against the stem-ball.

This system can not be dismantled, avoiding improper manipulations.

Supporting clip

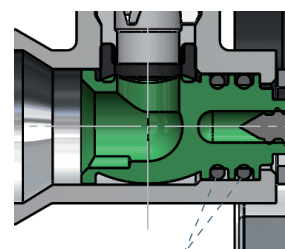
Seat



External

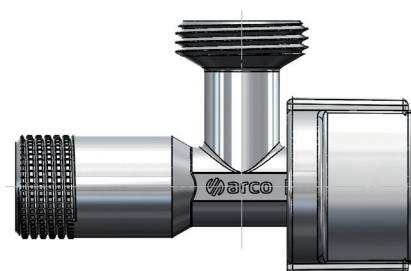
A double NBR o-ring placed on the stem assures external leaktightness. This double joint system guarantees safety against external leakage, use, ageing, ...

O-rings



KNURLED THREADS

L-85 VITAQ angle valves have the classic knurled system of ARCO on the thread to facilitate the installation. It makes easier the application of teflón, esparto, gras... to the thread, avoiding the sliding of these elements while application.



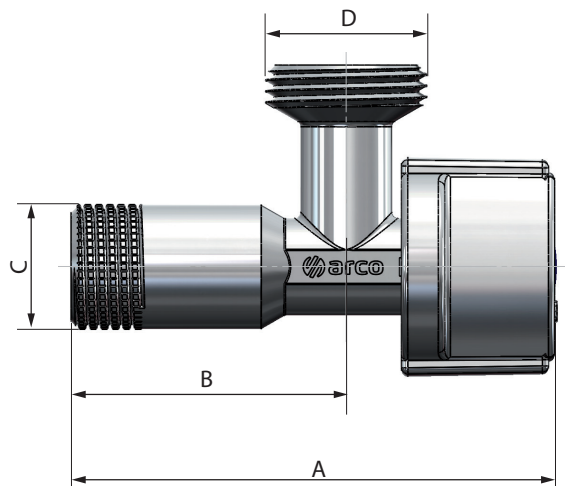


DIMENSIONS

L-85 VITAQ with NOVA ABS handle

Size	A	B	C	D
1/2M x 3/4M	79	45	G1/2	G 3/4

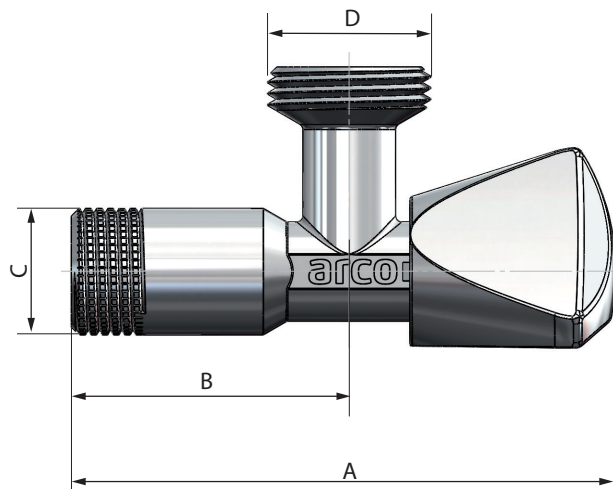
G Thread ISO 228



L-85 VITAQ with LUXE METAL handle

Size	A	B	C	D
1/2M x 3/4M	89	45	G1/2	G 3/4

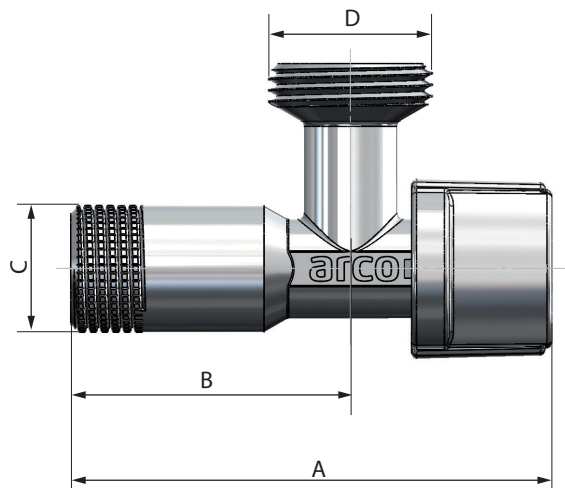
G Thread ISO 228



L-85 VITAQ with NOVA METAL handle

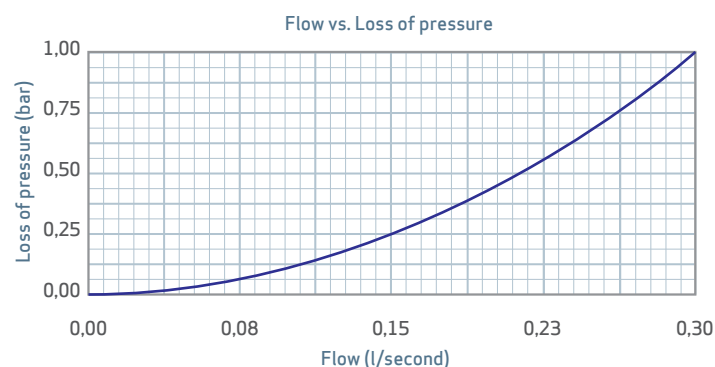
Size	A	B	C	D
1/2M x 3/4M	79	45	G1/2	G 3/4

G Thread ISO 228



HYDRAULIC FEATURES

Hydraulic features obtained according to EN 1267 standard



INSTALATION AND ASSEMBLY

The installation of valves must be done with the right tool.

The tool should be adjusted to the flat sides of the body of the valve, avoiding the deformation of the zone by high pressure of the tool.

Components of the valve must not be altered. The substitution or dismantling of the handle can cause external leaks.

All quarter turn handle valves should work totally open.

