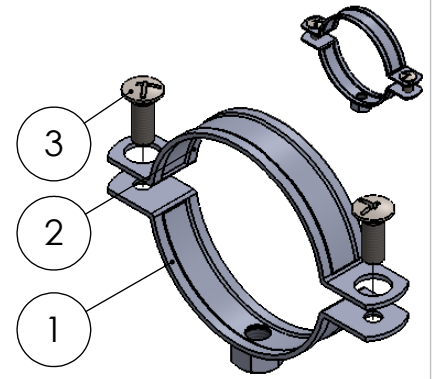
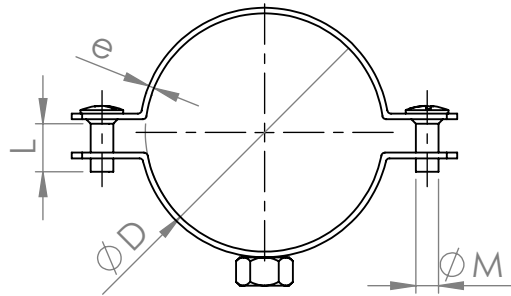
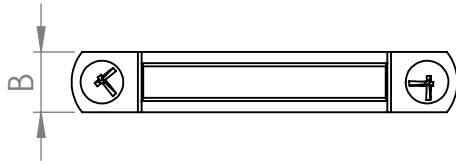
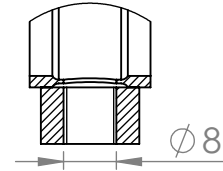


Desenho Técnico/Technical Sheet
Abraçadeira com Porca M8/ Clamp with Nut M8 W1




Secção E-E
Escala 1 : 1



3	Parafuso	Screw	Aço	Zincado
2	Chapa superior	Band	DC01ST12	Zincado
1	Chapa inferior	Band	DC01ST12	Zincado
Nº	Peça	Part	Material	Acabamento

Código	Medida		Banda Bxe (mm)	Parafuso MxL (mm)	
	Ø D(mm)	"			
2AEP050	20	1/2	16x1,5	M6x12	
2AEP075	25	3/4			
2AEP100	32	1"			
2AEP125	40	1 1/4		16x1,8	M6x16
2AEP150	50	1 1/2			
2AEP200	63	2"			
2AEP250	75	2 1/2			
2AEP275	80	2 3/4			
2AEP300	90	3"	16x1,8		M6x20
2AEP350	100	3 1/2			
2AEP400	110	4"			
2AEP450	115	4 1/2			
2AEP480	120				
2AEP500	125	5"		M6x25 Sext Comb.	
2AEP600	140	6"			

REV.	DATE	NAME	Description
B	23-09-2024	Rita Melo	Abraçadeira com Porca M8 W1
DRAWN	15-02-2016	Sarah Almeida	
 DIN ISO 2768- m DIN ISO 2768- K ISO 8015 SCALE:1:1 REVISION - B A4			DRAWING Nº 2AEP050-600 SHEET 1 OF 1