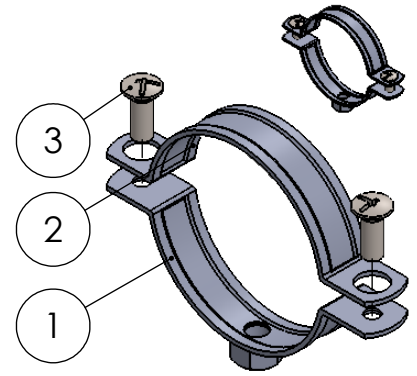
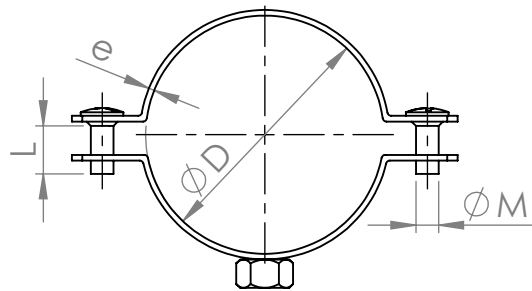
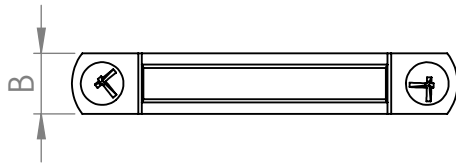
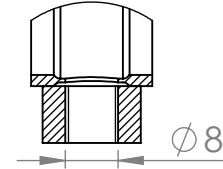


Desenho Técnico/Technical Sheet  
 Abraçadeira com Porca M8/ Clamp with Nut M8 W4




Secção E-E  
 Escala 1 : 1



3	Parafuso	Screw	A2	-
2	Chapa superior	Band	AISI 304	Polido
1	Chapa inferior	Band	AISI 304	Polido
Nº	Peça	Part	Material	Acabamento

Código	Medida		Banda Bxe (mm)	Parafuso MxL (mm)
	Ø D(mm)	"		
2AEPI050	20	1/2	16x1,5	M6x12 Combi.
2AEPI075	25	3/4		
2AEPI100	32	1"		
2AEPI125	40	1 1/4		
2AEPI150	50	1 1/2		
2AEPI200	63	2"		
2AEPI250	75	2 1/2	16x1,8	M6x16 Combi.
2AEPI275	80	2 3/4		
2AEPI300	90	3"		
2AEPI350	100	3 1/2		
2AEPI400	110	4"		
2AEPI450	115	4 1/2		
2AEPI480	120			
2AEPI500	125	5"		
2AEPI600	140	6"		
				M6x25 Combi.

REV.	DATE	NAME	Description
B	18-01-2024	Rita Melo	
DRAWN	02-11-2015	Sarah Almeida	
 DIN ISO 2768- m DIN ISO 2768- K ISO 8015 SCALE:1:1 REVISION - B A4			DRAWING Nº 2AEPI050-600 SHEET 1 OF 1