

## ASTER TC RAL 1018



FILTER DETAILS

### FEATURES

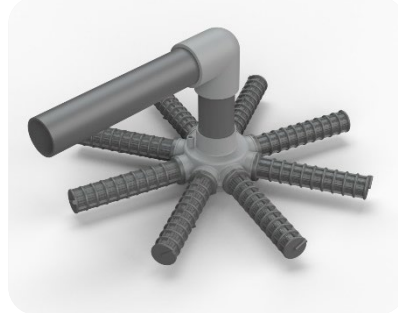
- ✓ Laminated filter manufactured with polyester resin and fiber glass.
- ✓ Excellent exterior finish in gelcoat.
- ✓ Filter color: RAL1018
- ✓ ¼" air and water drain
- ✓ Connections to six positions multiport valve with: filtration, backwash, rinse, recirculate, waste and closed operations.
- ✓ Transparent top lid with screws.
- ✓ Maximum temperature: 50°C
- ✓ Maximum pressure: 2.5 bar.

### CARACTERÍSTICAS

- ✓ Filtros laminados con resina de polyester y fibra de vidrio.
- ✓ Excelente acabado exterior en gelcoat.
- ✓ Filtro color: RAL 1018
- ✓ Purga de agua y aire ¼"
- ✓ Conexiones para válvula selectora de seis vías con operaciones de: filtración, lavado, enjuague, recirculación, vaciado y cerrado.
- ✓ Tapa superior transparente con tornillos.
- ✓ Máxima temperatura: 50°C.
- ✓ Máxima presión: 2.5 bar.



■ Cone diffuser  
■ Cono difusor



■ Laterals of 1"  
■ Brazos colectores de 1"



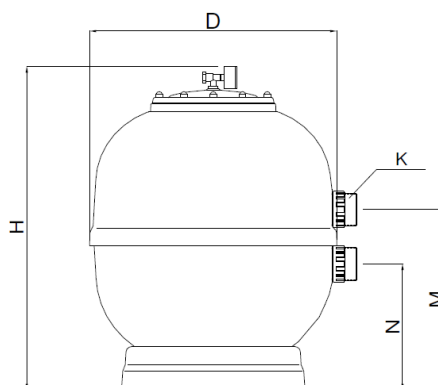
■ Transparent top lid with screws  
■ Tapa superior transparente con tornillos

### TECHNICAL DATA

Code	Model (mm)	Connections (mm/inch)		Filtering velocity (m³/h/m²)	Filtration Area (m²)	Flow (m³/h)	Maximum pressure (bar)	Sand (0.4-0.8mm) (kg)	Net weight (kg)	D (mm)	H (mm)	M (mm)	N (mm)
		mm	inch										
20609CL56	350	50	1 ½"	50	0.096	4.8	2.5	50	15	390	760	393	268
20610CL56	450	50	1 ½"	50	0.16	8	2.5	70	15	520	760	434	309
20611CL56	500	50	1 ½"	50	0.19	9.5	2.5	95	17	560	850	599	474
20612CL56	600	50	1 ½"	50	0.30	15	2.5	125	21	650	860	442	317
20613CL56	750	63	2"	50	0.44	22	2.5	290	30	800	930	555	325
21584CL56	900	63	2"	50	0.64	32	2.5	500	48	960	1100	659	389

### PACKAGING

Code	Units per pallet	Box dimension (cm)
20609CL56	15	39x39x76
20610CL56	10	52x52x76
20611CL56	8	56x56x85
20612CL56	8	65x65x86
20613CL56	2	80x80x93
21584CL56	2	96x96x110



TESTED  
ACCORDING TO  
EN16713-1

PROBADO DE  
ACUERDO A  
EN16713-1